

Clamping Cylinder



Clamping Cylinder

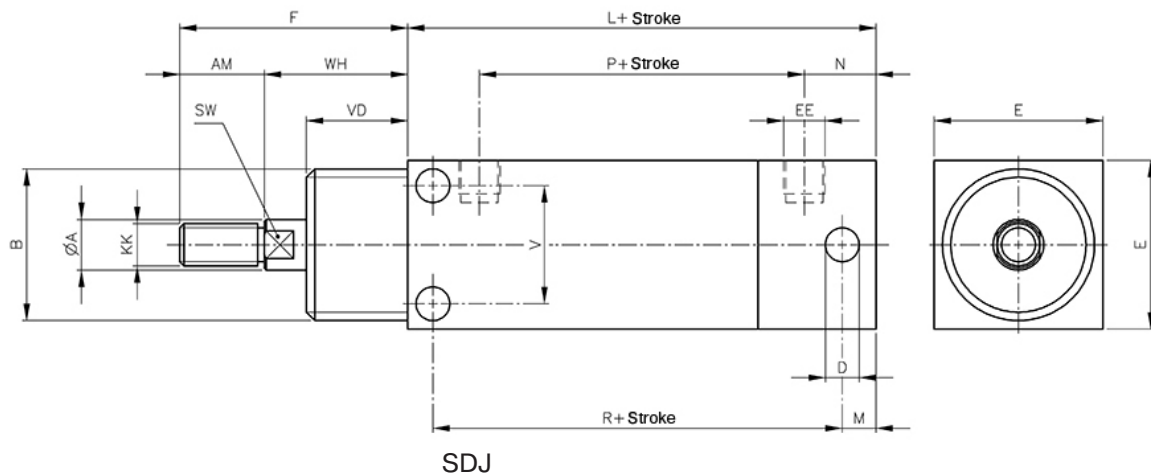
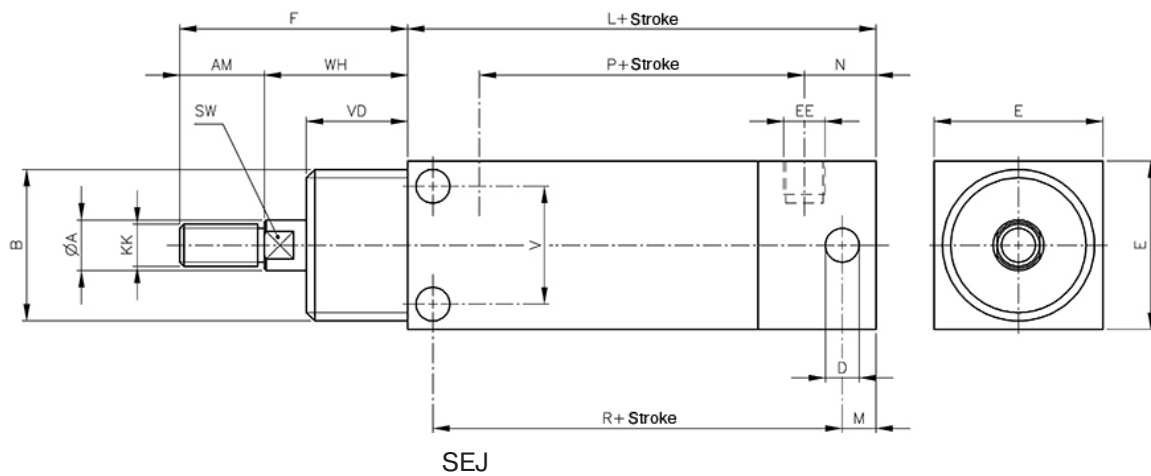
page 96

Technical information	
Diameter	Ø20 - Ø30 - Ø40 mm
Stroke	10 - 20 - 30 - 50 - 75 - 100 mm Single acting Double acting
Medium	Air
Pressure range	0,2 ... 10 bar
Temperature range	-20°C ... +80°C Below 0°C air has to be dried.
Variánsok	SEJ (Single acting) SDJ (Double acting)
Materials	
Tubetest	Anodized aluminum
Fedél	Anodized aluminum
Piston	Aluminum
Piston rod	Stainless steel
Guide bushing	Iglidur® D
Seals	NBR

S	E	J	20	/	25
			DIAMETER		
			20		
			30		
			40		
				STROKE	
				10	
				20	
				30	
				50	
				75	
				100	
FUNCTION					
			E	Single acting	
			D	Double acting	



SEJ/SDJ



Ø [mm]	A	B	D	E	F	L	M	N	P	R	V	AM	EE	KK	SW	VD	WH
Ø 20	10	M26x1,5	-	30	40	50	6	15	26	-	-	14	G1/8	M8	9	20	26
Ø 30	12	M36x2	7	40	54	61	8	17	27	47	28	20	G1/8	M10	10	24	34
Ø 40	12	M36x2	7	50	61,5	68.5	10	20,5	30	52	38	20	G1/8	M10	10	30	41,5

